

# International Journal of Innovative Research in Science, Engineering and Technology

(An ISO 3297: 2007 Certified Organization)

Website: [www.ijirset.com](http://www.ijirset.com)

Vol. 6, Issue 7, July 2017

## Analysis and Optimization of Alloy Wheel

Anusha. R, Tara Sasanka. C

Department of Mechanical Engineering, RVR & JC College of Engineering, Guntur, Andhra Pradesh, India

**ABSTRACT:** Alloy wheels are automobile wheels which are made from an alloy of aluminium or magnesium metals or sometimes a mixture of both. Alloy wheels differ from normal steel wheels because of their lighter weight, which improves the steering and the speed of the car. Alloy wheels will reduce the unstrung weight of a vehicle compared to one fitted with standard steel wheels. In the automobile sector, the industries are going to explore the composite material to achieve reduction of weight without significant decrease in vehicle quality and reliability. It is fact that reduction of unstrung weight leads to more precise handling and minimizing the fuel consumption. Composites are the only materials that cater to the never ending demand of the material technology. The aim of the project is to suggest a new composite material Magnesium AZ91E-2%Al<sub>2</sub>O<sub>3</sub> to the alloy wheels and evaluate its performance by performing the static & impact analysis in ANSYS. A parametric model is designed for Alloy wheel used in four -wheeler by collecting data from reverse engineering process from existing model. Alloy wheel models are designed in Autodesk Inventor14.0 software, then converted into IGES format and imported into ANSYS Workbench for analysis. Geometry of alloy wheel was optimized to get reduction in weight by performing the shape optimization.

**KEYWORDS:** Alloy wheel, magnesium composite material, Autodesk Inventor, ANSYS, impact analysis, optimization.

### I. INTRODUCTION TO WHEELS

#### 1.1 Wheel

A wheel is a circular device that is capable of rotating on its axis, facilitating movement or transportation while supporting a load (mass), or performing labour in machines. Common examples are found in transport applications [1]. Road wheel is an important structural member of the vehicle suspension system that supports the static & dynamic load encountered during vehicle operation [2]. A wheel, together with an axle overcomes friction by facilitating motion by rolling. In order for wheels to rotate, a moment needs to be applied to the wheel about its axis, either by way of gravity, or by application of another external force [3]. More generally the term is also used for other circular objects that rotate or turn, such as a ship's wheel, steering wheel and flywheel. Style, weight, manufacturability and performance are the four major issues related to the design of a new wheel [4].

#### 1.2 Types of Wheels

- *Steel Wheel*

Steel wheels are the first kind of wheels and also the most commonly used wheels. This wheel comprises of many sheets of steel, moulded into shape and welded typically together. These are strong and heavy wheels. These are commonly found on all types of vehicles. But, its having more weight when compare to alloy wheels such as aluminium wheel, magnesium wheel.

- *Rally Wheel*

Rally wheels are second kind of wheels. These wheels are also steel wheels. But, higher steel gauge for higher strength. The inner section of a steel wheel is usually welded to the rim along its entire circumference.

# International Journal of Innovative Research in Science, Engineering and Technology

(An ISO 3297: 2007 Certified Organization)

Website: [www.ijirset.com](http://www.ijirset.com)

Vol. 6, Issue 7, July 2017

- *Alloy Wheel*

Now a day an alloy wheels are mostly used in modern car, motorcycle and trucks. These wheels are made from a combination of alloy of aluminium and magnesium metals.

Advantages of an alloy wheels:

1. Lighter weight but similar strength.
2. Good conductors of heat.
3. Trendy appearance.
4. To improve vehicle handling/performance.
5. Good road to tire contact.

As the wheels are lighter the handling can be improved with the help of reducing un-sprung mass. This makes the suspension to follow the ground more closely and it provides more grip. It will also reduce fuel consumption when compare to steel wheels. Good heat conduction can facilitate the heat dissipation from the brakes. So, it improves braking performance in driving conditions [14].

➤ *Aluminium Alloy Wheels*

Aluminium is the material commonly used for making alloy wheels. It is the metal with features of excellent lightness, thermal conductivity, corrosion resistance, characteristics of casting, low temperature, machine processing and recycling, etc. This metals main advantage is reduced weight, high accuracy and design choice of wheel.

➤ *Magnesium Alloy Wheel*

Magnesium wheel is about 30% lighter than aluminium and also, excellent for size stability and impact resistance. Recently the technology for casting and forging is improved and the corrosion resistance of magnesium is also improving. Magnesium alloys are considered as the most promising material in 21st century, which possesses attractive properties compared to aluminium alloys such as low density, high specific strength and good cast ability. When used as wheel material magnesium alloy are not only able to reduce wheel mass and oil consumption, but also facilitate absorbing vibration and damping the noise emission.

Main properties of magnesium alloy wheels:

1. Light weight
2. High corrosion resistance
3. Low density ( $1.8 \text{ g/cm}^3$ )
4. High performance.

## II. PROBLEM DEFINITION AND OBJECTIVE

### *Problem Definition*

Now a day an aluminium alloy wheels are mostly used in vehicles because of excellent thermal conductivity. But, the problems in using aluminium alloy wheels are galvanic corrosion, increased fuel consumption and unsprung mass. Using magnesium alloy the unsprung mass of wheel can be reduced compared to aluminium alloy wheel. Therefore, fuel consumption will be reduced, but these alloy wheels are not giving good life at the larger run. In this work, magnesium composite material alloy wheel of a car is modelled and analyzed to overcome the above said problems.

### *Objective*

- New composite material (Magnesium AZ91E-2%Al<sub>2</sub>O<sub>3</sub>) as an alloy wheel material
- Impact Analysis
- Shape Optimization.

# International Journal of Innovative Research in Science, Engineering and Technology

(An ISO 3297: 2007 Certified Organization)

Website: [www.ijirset.com](http://www.ijirset.com)

Vol. 6, Issue 7, July 2017

## III. MODELLING OF ALLOY WHEEL USING AUTODESK INVENTOR PROFESSIONAL 2014

The wheel design has done by using AUTODESK INVENTOR PROFESSIONAL 2014 software. In this design created by using the sketch features are including extrude, extrude cut, revolving, holes, chamfer, roundness, shell, drafting, etc [11]. Design data was collected from reverse engineering process from existing model [12]. The dimensions of the wheel is shown in the below table.

Table 1: Specifications of alloy wheel

Wheel Specifications	
Rim Diameter	14"
Rim width	5.5"
Offset	43mm
PCD	4×100
Centre Bore	54.1mm

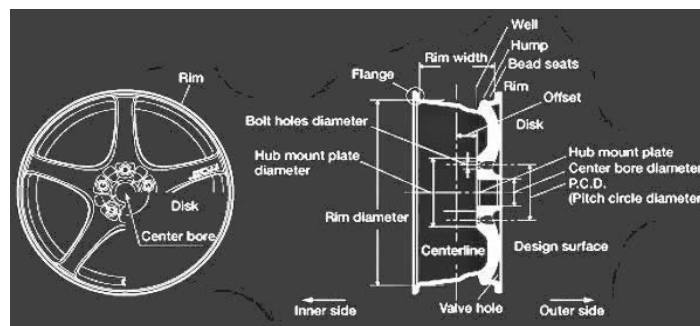


Fig.1: Wheel specifications

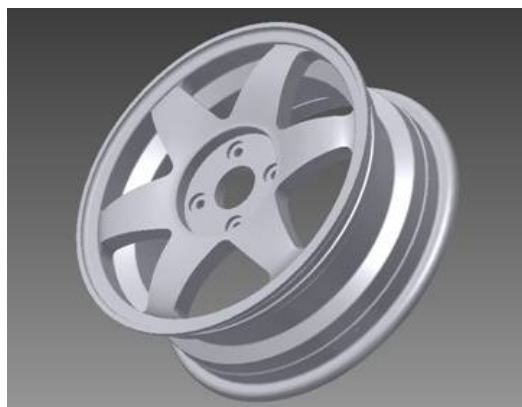


Fig.2: Alloy wheel 3D model

# International Journal of Innovative Research in Science, Engineering and Technology

(An ISO 3297: 2007 Certified Organization)

Website: [www.ijirset.com](http://www.ijirset.com)

Vol. 6, Issue 7, July 2017

## IV. ANALYSIS OF ALLOY WHEEL

### 3.1 Static Analysis

Static analysis calculates the effects of steady loading conditions on a structure, while ignoring inertia and damping effects [13], such as those caused by time-varying loads. Static analysis is used to determine the displacements, stresses, strains, and forces in structures or components caused by loads that do not induce significant inertia and damping effects [14]. Steady loading and response conditions are assumed; that is, the loads and the structure's response are assumed to vary slowly with respect to time.

#### I. Material compositions and properties

The AZ91 magnesium alloy is the most popular commercially available magnesium alloy. This alloy shows perfect cast ability and good mechanical properties combined with good corrosion resistance for the high purity version of the alloys

Magnesium composite AZ91E-Al<sub>2</sub>O<sub>3</sub>:

Base metal- Al 9%

ZN 1% and remaining Mg [17].

Reinforcement - nano particles of Al<sub>2</sub>O<sub>3</sub> 2% (50µm).

Table 2: Material Properties

Property	Value
Yield strength	146N/mm <sup>2</sup>
Elastic modulus	49913N/mm <sup>2</sup>
Mass density	1.85gm/CC
Poisson's ratio	0.35

#### II. Loading & boundary conditions for static Analysis

- Fixed Supports: The pitch circle holes are constrained in all degrees of freedom [19].
- Pressure Load: Consider 30 psi of air pressure load acting on the outer surface of the wheel [20]. Therefore  
 $30 = 30 \times 0.4535 \times 9.81 / (25.4)^2 = 0.207 \text{ N/mm}^2$
- Load: the load of 3800N is applied throughout the inner surface of the hub diameter by taking one middle node.

Gross weight= kerb weight + passenger weight+ luggage weight  
 $= 1138 + (5 \times 65) + 85 = 1548 \text{ Kgs}$

Each wheel carries =  $1568 / 4 = 387 \text{ Kgs}$

Each wheel load =  $387 \times 9.81 = 3796.47 \approx 3800 \text{ N}$ .

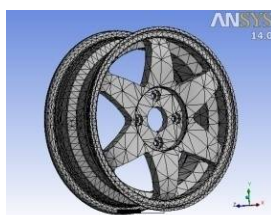


Fig.3: Meshed body



Fig.4: Fixed Supports



Fig.5: Remote Force



Fig.6: Pressure

# International Journal of Innovative Research in Science, Engineering and Technology

(An ISO 3297: 2007 Certified Organization)

Website: [www.ijirset.com](http://www.ijirset.com)

Vol. 6, Issue 7, July 2017

## III. Results for Static Analysis

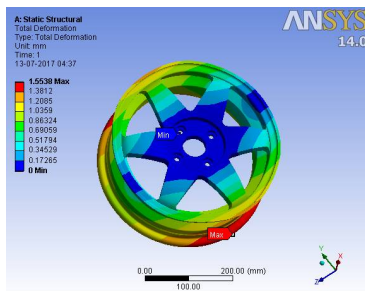


Fig. 7: Total Deformation

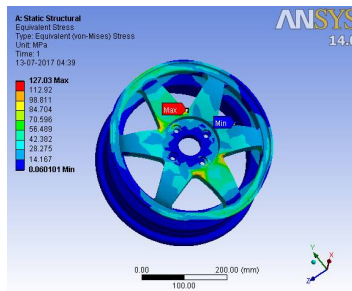


Fig. 8: Von-mises Stress

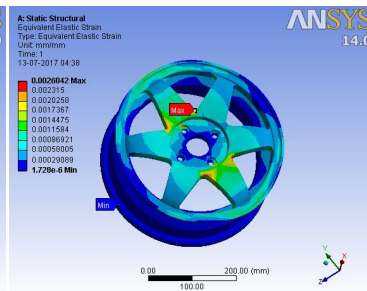


Fig.9: Von-mises Strain

From the above analysis, the results such as displacement, von-mises stress and equivalent elastic strain are obtained. Total deformation of magnesium composite material alloy wheels was shown in above fig.7. Total deformation was maximum at rim flanges and minimum at hub portion because hub area and bolts are fixed. The minimum and maximum deformation is shown in fig.7. Von-mises stress is shown in fig.8, the minimum stress at wheel width and spokes middle area and maximum stress at spokes intersection shown in above von-mises stress fig.8. Fig.9 shows the von-mises strain and it also shows the regions where maximum and minimum strain obtained.

## 4.2 Impact Analysis

ANSYS Workbench engineering software is used to do the impact analysis. In the impact analysis, the scale of the initial time step is very important. The assignment of the initial time step in the analysis has to catch up completely the dynamic behaviour of the structure.

Due to the test standard, the contact area between impactor and wheel rim cannot be smaller than 375 mm X 125 mm. The mass of the impactor must be adjusted to match with the size of the wheel rim. In this analysis, the size of the impactor in the finite element model shown in Figure 23 is similar to that used in the standard test. The contact area in the Figure 3 is 400mm X 150mm, the length of the impactor is 1223 mm, and the mass is 576Kg. The material of the impactor is the following: Young's modulus is  $2 \times 10^5$  Mpa, Poisson's ratio is 0.3, the density is  $7.85 \times 10^{-6}$  kg/mm<sup>3</sup>, Yielding strength is 250 Mpa and Ultimate strength is 460 Mpa.

Based on the test standard, the height of the impactor above the wheel rim must be 230 mm, but in the simulation the distance between them is adjusted to be 0 mm for saving the computer time, therefore, the potential energy is transferred to be a kinematic energy that the initial velocity of 2124.29 mm/s is assigned on the impactor.

$$v = 2gH = 2 \times 9810 \times 230 = 2124.29 \text{ mm/s}$$

Pressure of 30psi was applied on the wheel upper surface and fixed supports at the bolts and hub.



# International Journal of Innovative Research in Science, Engineering and Technology

(An ISO 3297: 2007 Certified Organization)

Website: [www.ijirset.com](http://www.ijirset.com)

Vol. 6, Issue 7, July 2017

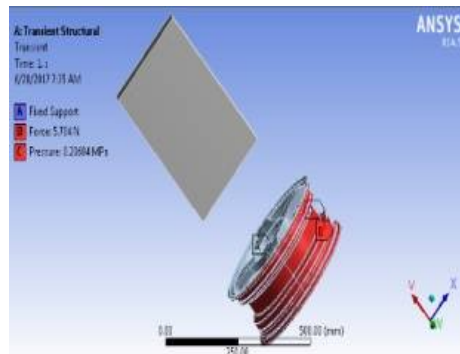


Fig .10: Impact Loading

## 4.3 Impact Analysis Results

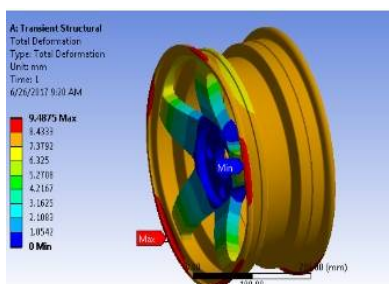


Fig. 11: Total Deformatin

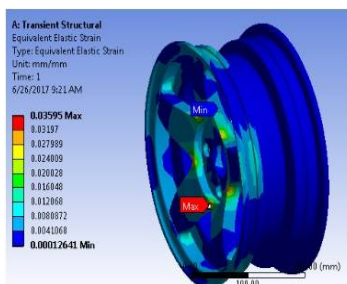


Fig. 12: Equivalent strain

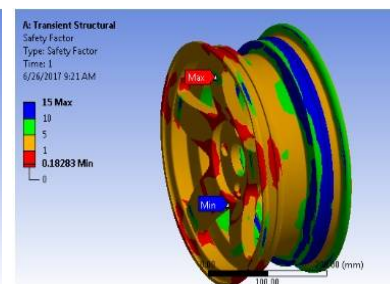


Fig. 13: Safety factor

By performin the above analysis the results such as total deformation, strain and safety factor. By the effect of impactor the total deformation shown in fig.11 was maximum at front flange portion and minimum at hub area and spokes. The equivalent strain was maximum at width and minimum at spokes intersection as shown in fig.12 and the locations where safety factor maximum and minimum was shown in fig.13.

## V. SHAPE OPTIMIZATION

The objective of optimization technique is to minimize the mass and reduces the cost of production [21]. In this work ANSYS Workbench is used to find the optimum shape of the alloy wheel. This software comes with Shape Optimum Module. By using ANSYS workbench shape optimization module shape optimization of alloy has been carried out to remove material of the magnesium composite alloy wheel where stresses are low for loading and boundary condition. Shape optimization gives proper shape of alloy wheel. Topology optimization starts with an initial design (the original design area), which also contains any prescribed Conditions (such as boundary conditions and loads). Fixed supports at bolts, load of 3800N at the hub surface and pressure of 30Psi (0.207Mpa) at wheel width were applied and carried out the optimization process [22].

The optimization process determines a new material distribution by changing the density and the stiffness of the elements in the initial design while continuing to satisfy the optimization constraints, such as the minimum volume or the maximum displacement of a region. The objective of a shape optimization is to minimize stress concentrations using the results of a stress analysis to modify the surface geometry of a component until the required stress level is reached.

# International Journal of Innovative Research in Science, Engineering and Technology

(An ISO 3297: 2007 Certified Organization)

Website: [www.ijirset.com](http://www.ijirset.com)

Vol. 6, Issue 7, July 2017



Fig. 14 & 15: optimization of alloy wheel

After performing the optimization the results were obtained as shown in the above fig.14 & 15. In fig.14 & 15 red colour represents the material that is to be removed and where the stresses are low, brown colour represents marginal area which can be removed or maintained. And the grey colour represents that material should be keep and the stresses were high at that area. By performing the optimization weight was reduced by 20%



Fig. 16 & 17: Optimized alloy wheel

According to the Shape optimized results the material was removed where the stresses were low and fig. 16& 17 represents the alloy wheel shape after removal of unwanted material. Material was removed uniformly until the weight reduced to 20%.

## 5.1 Analysis for optimized Alloy Wheel

Static Analysis was carried out for the optimized design of magnesium composite material. Boundary, loading conditions and procedure were same as before optimization.

# International Journal of Innovative Research in Science, Engineering and Technology

(An ISO 3297: 2007 Certified Organization)

Website: [www.ijirset.com](http://www.ijirset.com)

Vol. 6, Issue 7, July 2017

## 5.2 Analysis Results after Optimization

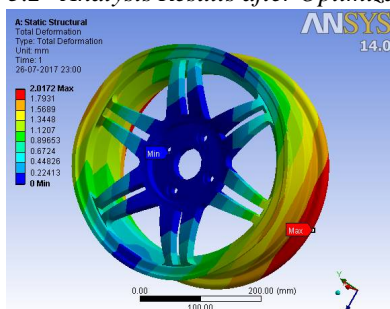


Fig.18: Total deformation

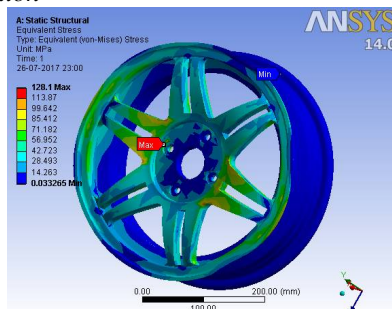


Fig.19: Von-mises stress

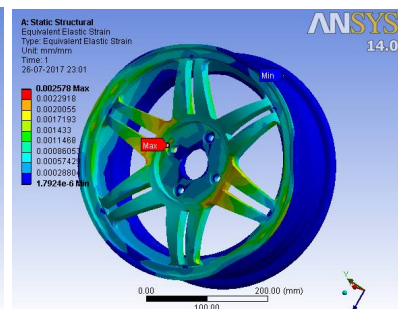


Fig.20: Von-mises strain

After optimization weight of the alloy wheel was reduced and analysis carried out on the optimized design. The deformation for the optimized design was shown in fig.18. Minimum deformation of 0mm located at hub area and maximum deformation of 2.0172mm was located at flange portion. Von-mises stress was minimum at width middle face and maximum at spokes slot as shown in fig.19 and minimum von-mises strain of 1.7924e-006 at wheel width, maximum of 0.002578 at spokes slot shown in fig.20.

Table.3 Comparison of alloy wheel mass before and after optimization

Mass of alloy wheel before optimization (Kgs)	Mass of alloy wheel after optimization (Kgs)	Percentage of mass reduction
4.5602	4.1829	20%

Table. 4 Result Comparison before and after optimization

Object	Load (N)	Pressure (Mpa)	Stress (Mpa)
Before Optimization	3800	0.207	127.03
After optimization	3800	0.207	128.1

## VI. RESULTS AND DISCUSSIONS

From the static analysis minimum deformation of Magnesium AZ91E-2%Al<sub>2</sub>O<sub>3</sub> composite material alloy wheel was 0mm and maximum deformation of 1.5538mm, minimum von-mises stress of 6.0101e-002Mpa and maximum of 127.03Mpa, minimum & maximum von –mises strain of 1.728e-006 & 2.6042e-003 were obtained. Stresses obtained in the wheel were within the yield stress so the design and material were safe. From the impact analysis total deformation, stress, strain and safety factor were obtained. Total deformation of 0mm minimum and 9.4875mm maximum, minimum von-mises strain of 0.0001264 and maximum strain of 0.03595, and safety factor of 0.18283 was minimum & 15 was maximum. Stress concentration was maximum at front flange portion. By performing the optimization the mass of the alloy was reduced by 20%, before optimization the mass was 4.5602Kgs and after optimization its mass was reduced to 4.1829Kgs. The total deformation for optimized wheel was obtained as 0mm minimum and 2.0172mm maximum. Von-mises stress of 0.033265Mpa minimum and 128.1Mpa maximum was obtained.



# International Journal of Innovative Research in Science, Engineering and Technology

(An ISO 3297: 2007 Certified Organization)

Website: [www.ijirset.com](http://www.ijirset.com)

Vol. 6, Issue 7, July 2017

## VII. CONCLUSION

The results such as stress, strain and deformation obtained in static analysis for the alloy wheel of Magnesium AZ91E-2%Al<sub>2</sub>O<sub>3</sub> composite were within in the yield strength so the material and design for the alloy were safe. Stress concentration was high at spokes intersection.

For the impact analysis also the material withstands the applied loads and stresses produced are within in the limit of safety. Stresses are concentrated at flange portion in impact analysis.

By shape optimization weight of the wheel reduced by 20% by removing the material at unstressed areas, wheel was redesigned based on optimization data. The stress obtained in optimized wheel is also safe. Maximum stresses were located at spokes intersections and spokes slots.

For all analysis the material performance was good. So, the new Magnesium AZ91E-2%Al<sub>2</sub>O<sub>3</sub> composite material to be successfully used as an alternative material for the alloy wheels of four-wheelers.

## REFERENCES

1. S Vikranth Deepak, C Naresh and Syed Altaf Hussain (2012), Modelling and analysis of alloy wheel for four wheeler vehicle, *international Journal of Mechanical Engineering and Robotics Research (IJMERR)* Vol.1, Issue No.3, ISSN 2278-0149.
2. P. V. Ravi Kumar. P.V., Satya Mehar. R (2013), Topology Optimization of Aluminium Alloy Wheel *International Journal of Modern Engineering Research (IJMER)* Vol. 3, Issue. 3, pp-1548-1553.
3. Emmanuel M. Adigio and Ebughni O. Nangi (2014), Computer Aided Design and Simulation of Radial Fatigue Test of Automobile Rim Using ANSYS, *Journal of Mechanical and Civil Engineering (IOSR-JMCE)* Volume 11, PP 68-73.
4. Muhammet cerit (2010), Numerical simulation of dynamic side impact test for an aluminium alloy wheel, *scientific research and essays (SRE)* vol. 5(18), pp.2694-2701.
5. Sourav Das (2014), Design and weight optimization of aluminium alloy wheel, *international journal of scientific and research publications (IJSRP)*, volume 4, Issue.6, ISSN 2250-3153.
6. Banusha srikanta P.veera raju (2012), Geometrical And Material Optimization Of Alloy Wheel For Four Wheeler, *International journal of research and innovation (IJRI)* vol.1, issue.1
7. M. Saran Theja, M.Vamsi Krishna (2013), Structural and Fatigue Analysis of Two Wheeler Lighter Weight Alloy Wheel, *IOSR Journal of Mechanical and Civil Engineering (IOSR-JMCE)* Volume 8, Issue 2 , PP 35-45.
8. M.V. Prabha and Pendyala Veera Raju(2012), Design and Development of Aluminium Alloy wheels, *International Journal of Advanced Science, Engineering and Technology (IJASET)*, Vol 1, Issue 2, 2012, pp 55-60.
9. P.Praveen, D.Gopichand (2014), Geometrical Optimization And Evaluation Of Alloy Wheel Four Wheeler, *International Journal of Research and Innovation (IJRI)* Volume No: I Issue No. : III
10. D.Sameer Kumar , C. Tara Sasanka , K. Ravindra, KNS Suman (2015), Magnesium and Its Alloys in Automotive Applications – A Review, *American Journal of Materials Science and Technology (AJMST)*, Vol.4, Issue No.1, pp. 12 – 30.
11. Sasank Shekhar Panda, Jagdeep Gurung, Udit Kumar Chatterjee, Saichandan Sahoo (2016), Modelling and fatigue analysis of Automotive wheel rim. *International Journal of Engineering Sciences & Research Technology (IJESRT)* Vol.5, Issue. 4.
12. Mr. P. H. Yadav, Dr. P. G. Ramdasi (2012), Optimization of Car Rim Using OptiStruct, *IOSR Journal Of Environmental Science, Toxicology And Food Technology (IOSR-JESTFT)*, Volume 2, Issue 3, PP 10-15.
13. Sivakrishna. V & Bala bashker. J (2014), Impact Analysis of Aluminum Alloy Wheel, *International Journal & Magazine of Engineering, Technology, Management and Research (IJMETMR)*, Volume No: 1, Issue No: 12, PP- 608.
14. Prem J., Raghupathi P and Kalaiyaran A (2016), Analysis of Magnesium Alloy Wheel for Four Wheeler. *International Journal of Recent Science and Research (IJSRSR)*, Vol.7, Issue.8, pp. 13126-13130.
15. N. Satyanarayana & Ch. Sambaiah (2012), Fatigue Analysis of Aluminium Alloy Wheel under Radial Load, *International Journal of Mechanical and Industrial Engineering (IJMIE)*, Vol-2, Issue-1, ISSN No. 2231 –6477.
16. Liangmo Wang- Yufa Chen - Chenzhi Wang - Qingzheng Wang (2010) Fatigue Life Analysis of Aluminum Wheels by Simulation of Rotary Fatigue Test, *Journal of Mechanical Engineering (JME)*, Vol.1 pp-31-39.
17. D. Sameer Kumar, K.N.S. Suman, C. Tara Sasanka, K. Ravindra, Palash Poddar, Venkata Siva S.B (2016), Microstructure, Mechanical response and Fractography of AZ91E/Al<sub>2</sub>O<sub>3</sub>(p) Nano Composite fabricated by Semi Solid Stir Casting Method, *Journal of Magnesium and Alloys (JMA)*.
18. K Kalyani Radha, G Srinivas Kumar and J Paul Rufus Babu(2015), Modeling and Structural Analysis of Alloy Wheel Using COSMOS, *European Journal of Advances in Engineering and Technology (EJAET)*, Vol. 1, Issue.6.
19. Jaspreet Singh, Siddhartha Saha (2015), Static Analysis of alloy wheel using ANSYS15.0. *International Journal of Research in Engineering and Technology (IJRET)*, Volume: 04 Issue: 07.
20. J. Janardhan (2015). Radial Fatigue Analysis of An Alloy Wheel, *International Journal of Engineering Research and Applications (IJERA)*, Vol. 4, Issue 12, pp.253-258.
21. Mr. H.B.Ramani, Mr. Neeraj Kumar(2013), Using Shape Optimization Tool In Ansys Software For Weight Reduction Of Steel Connecting Rod. *International Journal of Engineering Research & Technology (IJERT)*, Vol. 2 Issue 2.
22. Mayur S. Kamble, Dr.R.N. Panchal, Vinod D. Yelapale(2016), Weight Optimization Using Topological Approach and Strength Evaluation of Chain Link Plate. *International Journal of Innovative Research in Science, Engineering and Technology(IJIRSET)*, Vol. 5, Issue. 7.